

Residential LFP Battery Series

LV-BST-L2.56Aa

51.2V 50Ah 2.56kWh

With its modular design, the Multi-functional Energy Storage System offers endless possibilities. Customize the system to meet your specific needs by easily adding or removing energy storage units.

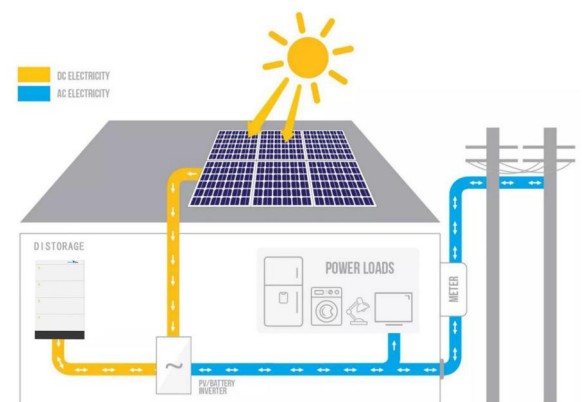


LV-BST-L2.56Aa is a stackable energy storage battery, that can easily and seamlessly integrate with your home's existing solar panels and inverters to harness excess solar energy at night, and provide reliable emergency backup power when the power grid is interrupted to achieve 24-hour uninterrupted power consumption at home. Also, you can feed back extra electricity by connecting to the grid to earn money.

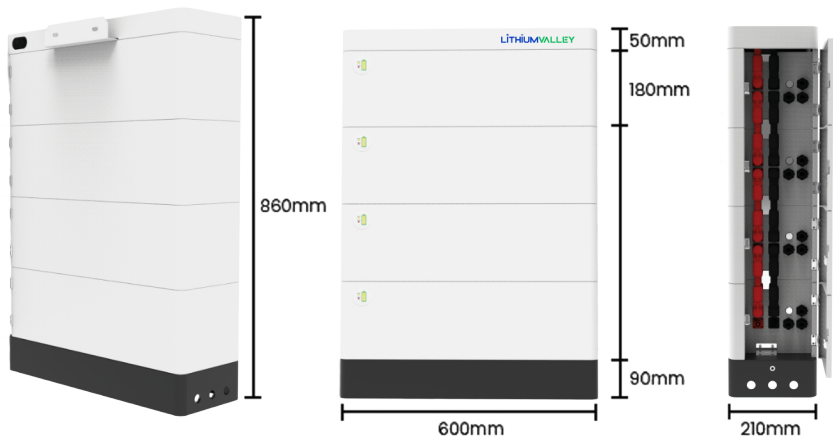
**DONGUAN
LITHIUM VALLEY
ENERGY CO., LTD .**


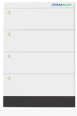
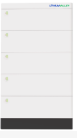


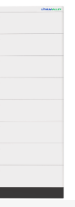
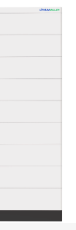
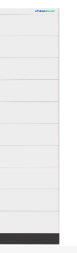
FEATURES

- >>>> 51.2V Low voltage LiFePO4 battery module, Single module is 51.2V 50Ah 2.56kWh.
- >>>> 1 to 10 layers recommended.
- >>>> Can choose common 48V single or three phase 5KW, 8KW, 10KW, 12KW off grid or hybrid on and off grid solar inverter.
- >>>> Cobalt Free Lithium Iron Phosphate (LFP) Battery:
Maximum Safety, Life Cycle and Power.
- >>>> Capable of High-Powered Emergency-Backup and Off-Grid Function.
- >>>> Self-Consumption Optimization for Residential and Commercial Applications.
- >>>> Modular Design Simplifies Transport and Installation.



Dimensions



Technical Specification		LV-BST-L2.56Aa						
Model	51.2V150Ah	51.2V200Ah	51.2V250Ah	51.2V300Ah	51.2V350Ah	51.2V400Ah	51.2V450Ah	51.2V500Ah
Number of layers	3 layers	4 layers	5 layers	6 layers	7 layers	8 layers	9 layers	10 layers
Picture								
Energy	7.68KWh	10.24KWh	12.8KWh	15.36KWh	17.92KWh	20.48KWh	23.04KWh	25.6KWh
Dimension (L*W*H)mm	600*210*680	600*210*860	600*210*1040	600*210*1220	600*210*1400	600*210*1580	600*210*1760	600*210*1940
Weight(KG)	94	123	152	181	210	239	268	297
Operating Voltage Range		43.2V~56.16V						
Recommend charge current		25A						
MAX. continuous charge/discharge current		50A						
Peak discharge current		150A 600ms						
LED Display		The information of Battery, such as SOC, battery working status.						
Communication		Support RS485 / CAN						
Charging temperature		0℃~55℃						
Discharge temperature		-20℃~60℃						
Environment		Indoor/outdoor under roof (avoid direct sunlight)						
Relative humidity		5%~95%						
Cooling		Natural cooling						
Cell technology		Lithium-iron phosphate (LiFePO4)						
Life cycle		6000 times @80%DOD						
Protection Rating		IP65						
Certificates		CB, IEC62619, UKCA, CE-EMC, CE-GPSD, EN62619 ; UN38.3, MSDS						

Single module Technical Specification	
Module	51.2V 50Ah, 2.56kWh
Dimension (L*W*H)	Battery Box:600*210*180mm
Battery module weight	29kg

*The actual product may have slight differences from some promotional videos or pictures. Please refer to the actual product. Unless otherwise specified the data on this page are all from our company's laboratory. The data may have errors due to changes in the objective environment.

*The specifications are subject to change without prior notice.